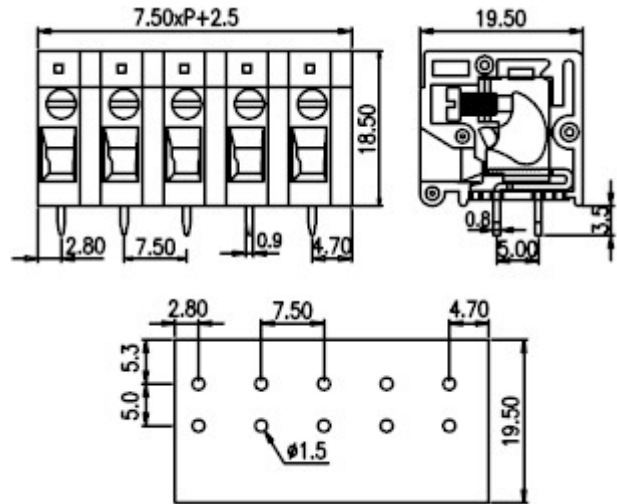
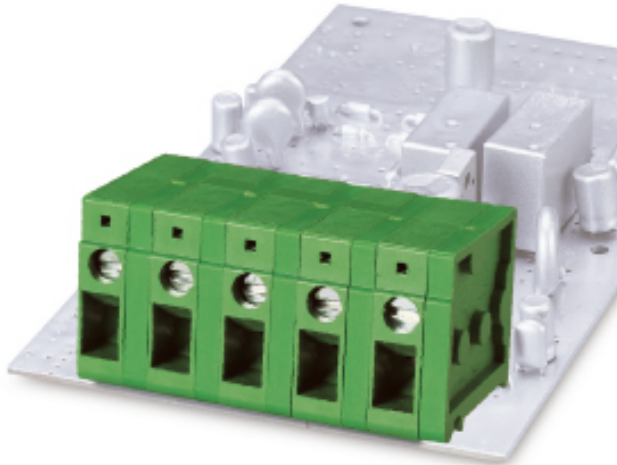




Front entry type terminal blocks / DT-123 series



**DT-123RA-..P3**



**Pitch: 7.50mm**

Approval	 	
Technical Data	UL	IEC
Rated voltage	300V	750V
Rated current	20A	24A
Wire range		2.5mm <sup>2</sup>
Solid wire (AWG)	22~12	
Stranded wire (AWG/mm <sup>2</sup> )	22~12	
Rated surge voltage (UL/IEC/Max.)	1.6 / 2.5 / 4 KV	
Torque (Lb-in)	4.5	
Screw	M2.5	
Wire strip length	13~15mm	
Pole	Cat. No.	
02	DT-123RA-02P3	
:	:	
:	:	
24	DT-123RA-24P3	

**TEL:** +886-2-2908-0614

**FAX:** +886-2-2908-8549

**E-mail:** [infor@dinkle.com.tw](mailto:infor@dinkle.com.tw)